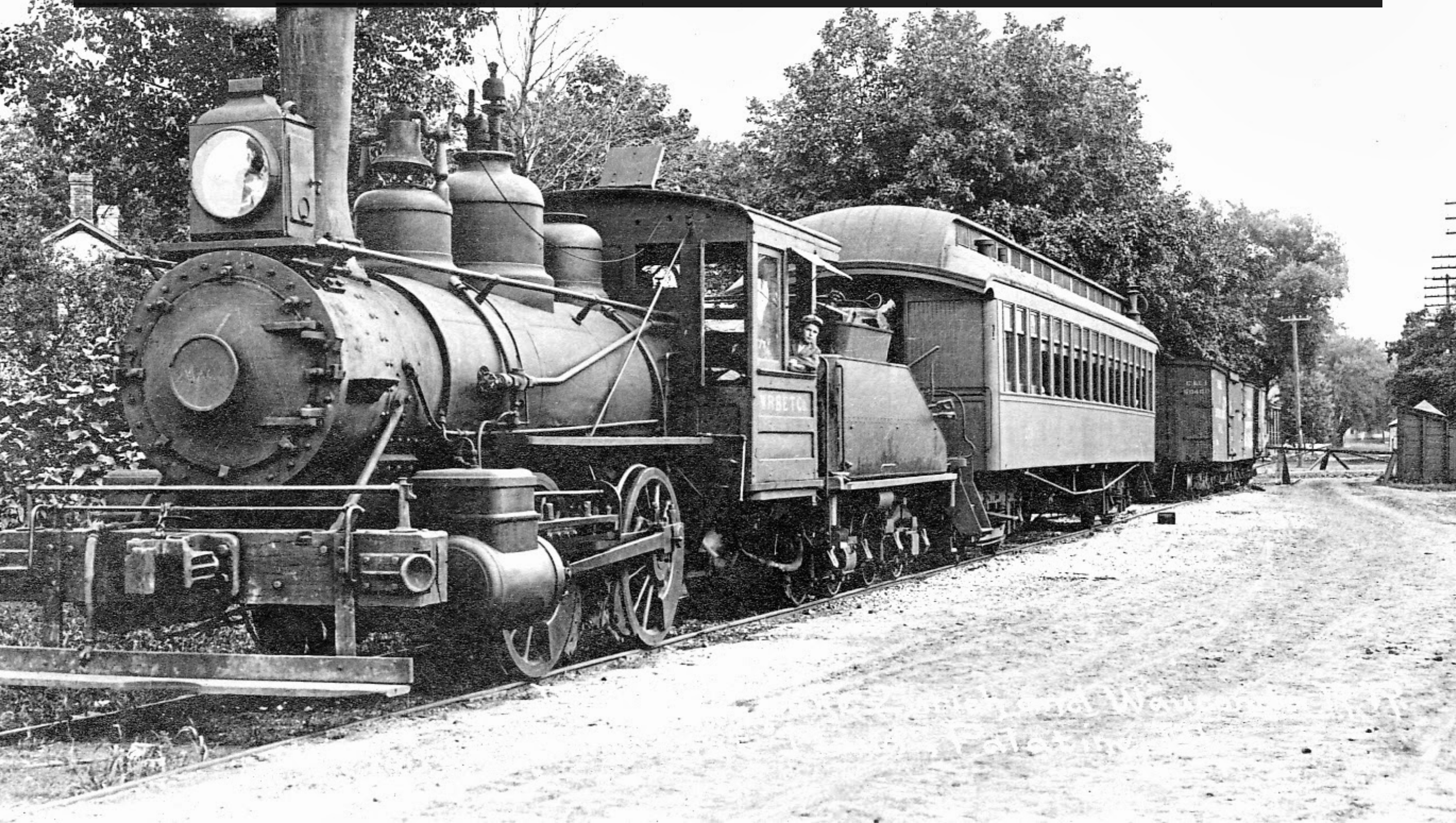


PALATINE, LAKE ZURICH & WAUCONDA RAILROAD

WAUCONDA'S SHORT-LINE & SHORT-LIVED RAILROAD



IDEAS

In 1906, a Wauconda inventor named John Spencer had an idea for an electric railroad that would run through Wauconda.

Spencer owned the saw and grist mill on Mill Street by Bangs Lake. Unfortunately, it burned down later that year and he moved to McHenry.

Source: "Daily Herald"

RAILROAD MEETING



Tuesday Evening
July 2, 1912

at 8: o'clock

Wauconda

The railway would be a good way to help up-and-coming Wauconda to bring in vacationers.



Grading the Right-of-Way

J.K. Orvis, a lawyer, and Robert Winn, a railroad entrepreneur, raised the funds to build the railroad.



Making Railroad Ties

OPENING

- The railroad opened on May 10, 1913.
- The Wauconda population was 368 and getting ready to boom.
- The railway was 11 miles long and connected Wauconda, Lake Zurich, and Palatine.

*Yourself and friends are most cordially
invited to attend the Opening of the
Palatine, Lake Zurich and
Wauconda Railroad
at Wauconda, Ill.,*

Saturday, May the 10th,

1913

SENT BY *Page C. Smith*

TRAINS WILL RUN EVERY HOUR BETWEEN PALATINE
AND WAUCONDA UNTIL MID-NIGHT
PROGRAM FOR THE OCCASION

To get ready for the big opening day, the village purchased a large blinking sign and hung it over Main Street.



Source: Wauconda Area Library Digital History

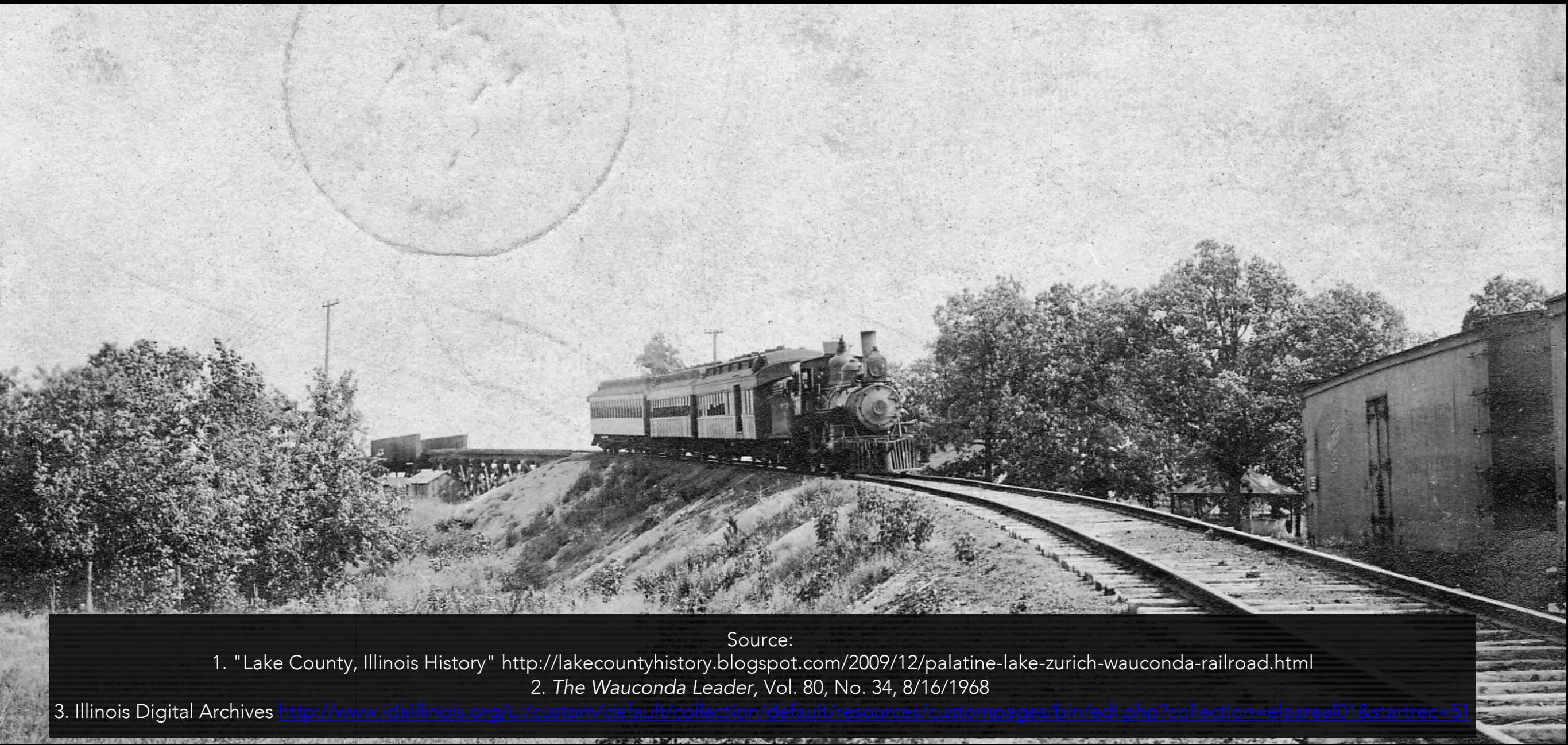
MAY 10, 1913

OPENING DAY

*“Old”
Maud*



The steam engine, *Old Maud*, was built in 1885 and purchased from the Chicago and Northwestern Railroad (1). It was named *Maud* for a comic strip, "Maud the Mule" (2). The other two engines were *Molly* and *Betsy* (3).



Source:

1. "Lake County, Illinois History" <http://lakecountyhistory.blogspot.com/2009/12/palatine-lake-zurich-wauconda-railroad.html>

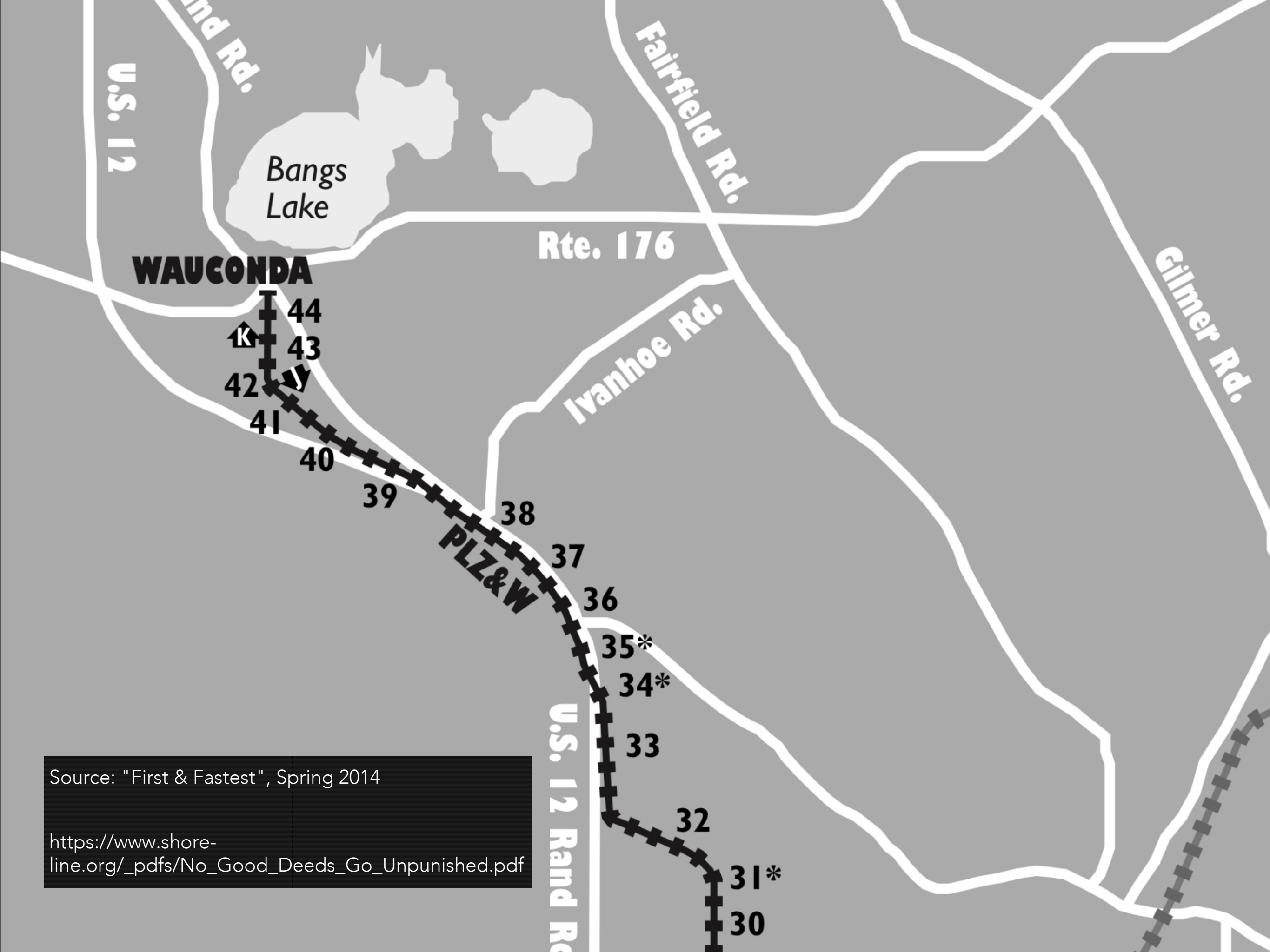
2. *The Wauconda Leader*, Vol. 80, No. 34, 8/16/1968

3. Illinois Digital Archives <http://www.idaillinois.org/ui/custom/default/collection/default/resources/custompages/bin/edi.php?collection=elaareal01&startrec=51>

[illegible]

https://www.shoreline.org/_pdfs/No_Good_Deeds_Go_Unpunished.pdf

***Digital scans of several of the original deeds can be viewed and downloaded by Shore Line members at <http://www.shore-line.org/pdfs/good-deeds>**



Source: "First & Fastest", Spring 2014

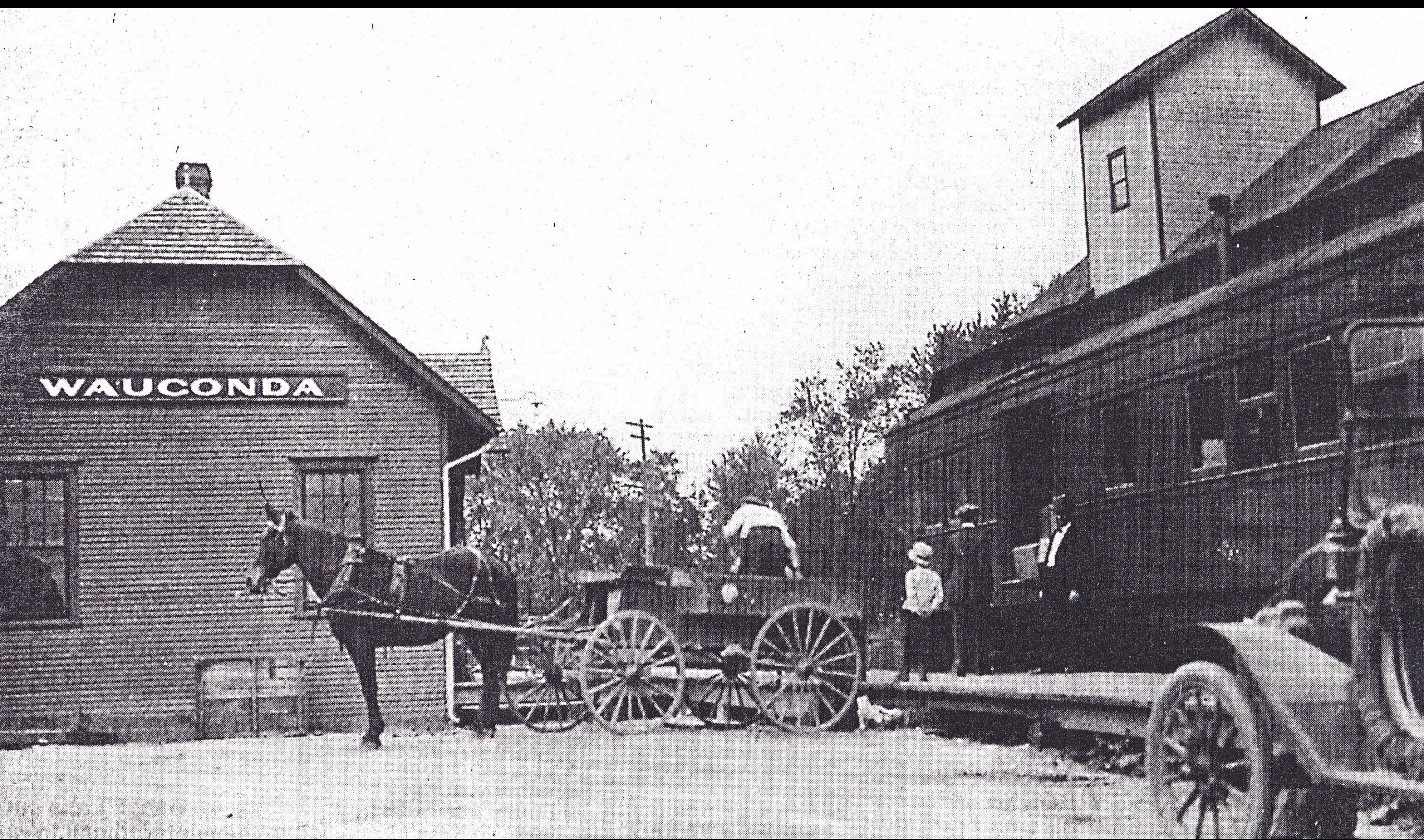
https://www.shore-line.org/_pdfs/No_Good_Deeds_Go_Unpunished.pdf



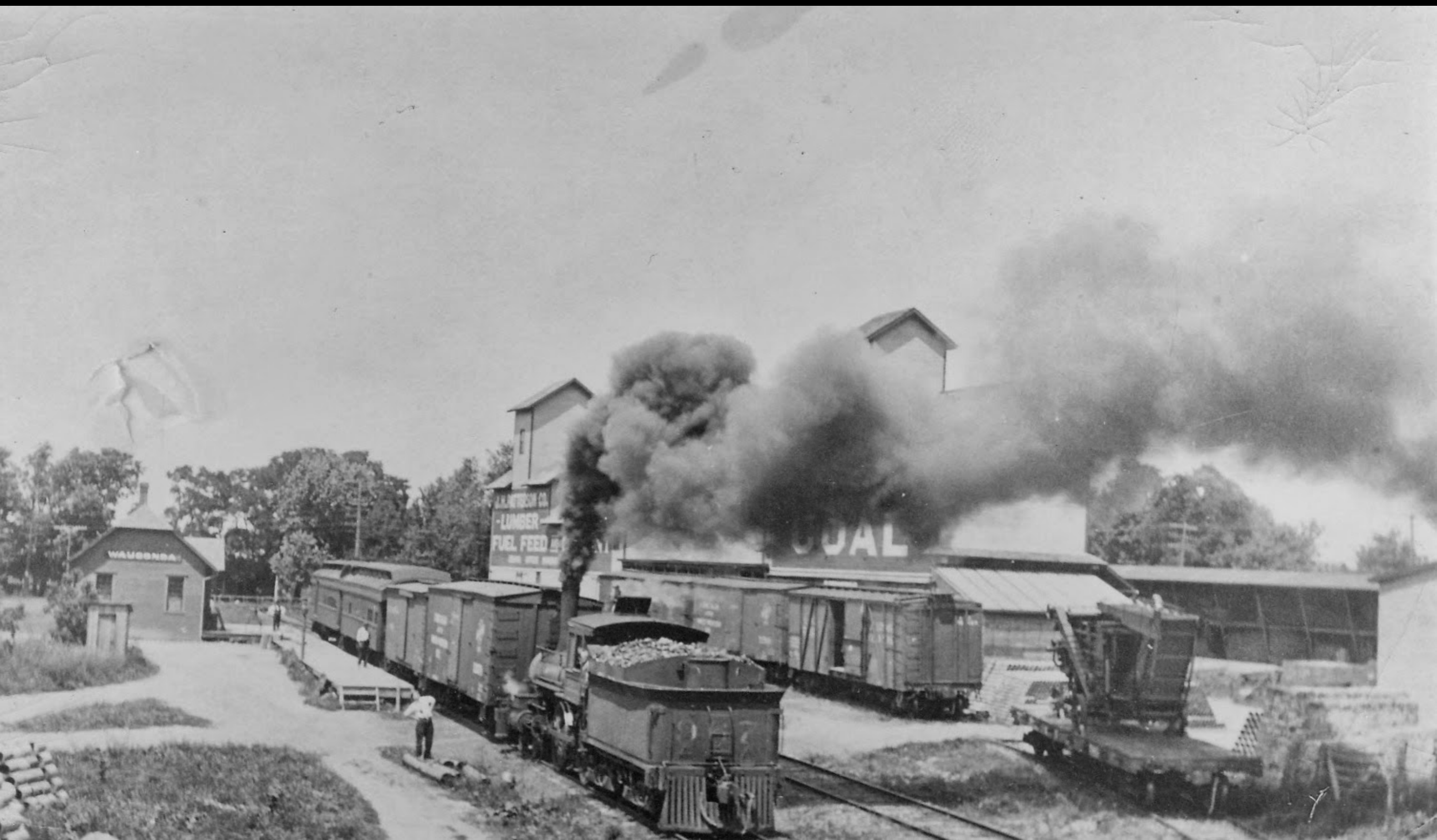
This is Memorial Park. This was the site of the railroad's northern terminal and train depot.

Source: "First & Fastest", Spring 2014

https://www.shore-line.org/_pdfs/No_Good_Deeds_Go_Unpunished.pdf



Source: Wauconda Area Library Digital History



Source: Wauconda Area Library Digital History

A SHORT RUN



- Years of financial trouble followed.
- Passengers didn't take the train much in the winter months.
- Railroad and engines fell into disrepair.
- Cars and roads improved and competed for transportation from Chicago.
- The federal government condemned the railroad in 1926.

WHAT'S LEFT OF THE PLZ&W?



▲ Wauconda station building in 1913. —*Palatine Historical Sociey photo* ▶ Present day photo of the Wauconda station building which was moved several blocks to the north and west. ▼ **Location J.** Old Maud's engine house as it appears today. —*Two photos by the Author*

OLD STATION IS NOW A HOUSE (MOVED TO MAPLE STREET ACROSS FROM GRADE SCHOOL)

Source: "First & Fastest", Spring 2014

https://www.shore-line.org/_pdfs/No_Good_Deeds_Go_Unpunished.pdf



172 Maple Ave
(across from
Grade School)



Some "Right of Way" paths are visible in local forest preserves.

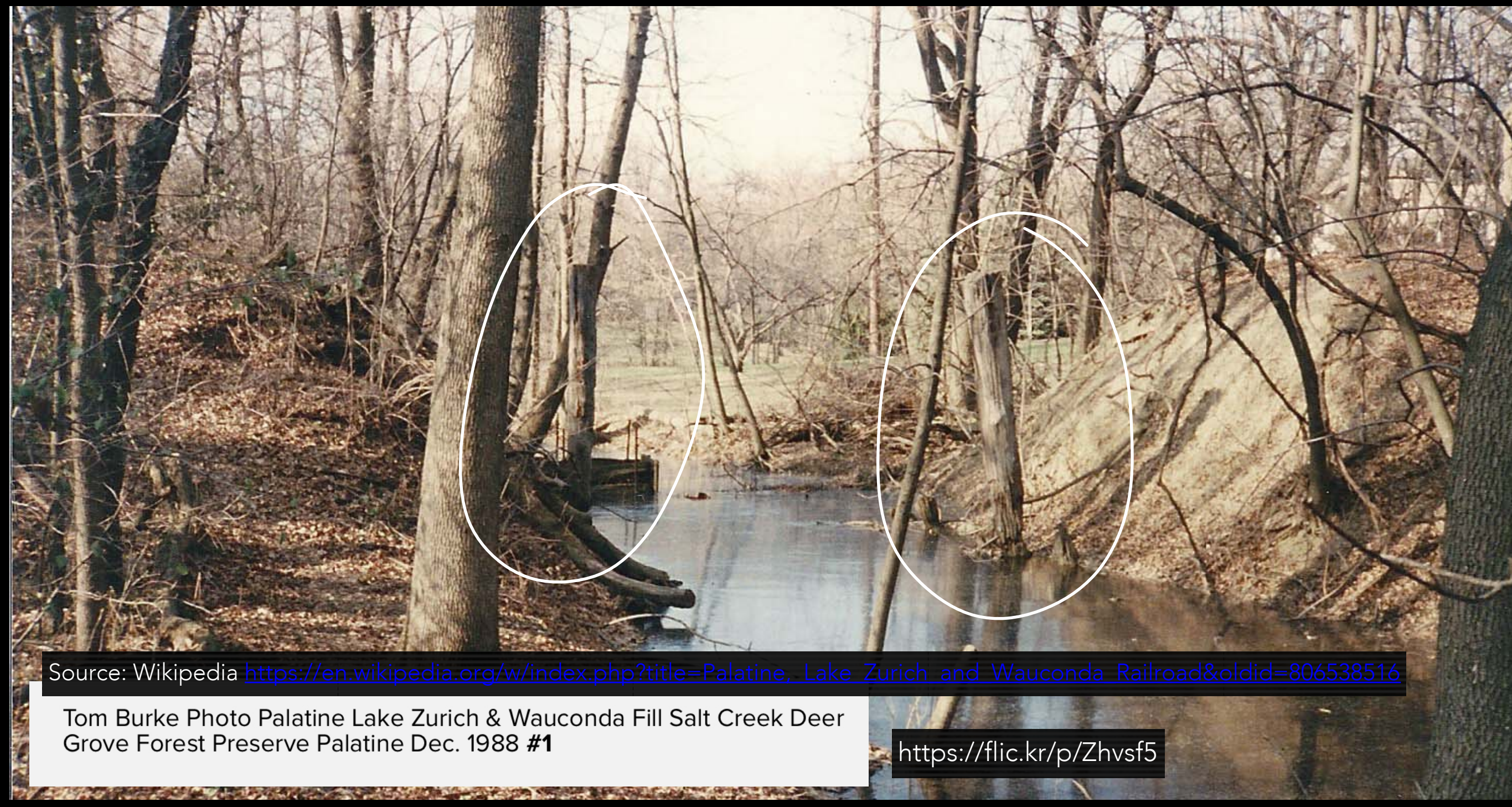


▲ **Location C.** Looking south with Dundee Road crossing in the background. —Joe and Dan Petykowski photo, Palatine Historical Society

Source: "First & Fastest", Spring 2014

https://www.shore-line.org/_pdfs/No_Good_Deeds_Go_Unpunished.pdf

"Portions of the PLZ&W right-of-way are still visible, especially along the Palatine Bike Path south of Dundee Road and just north of Dundee Road in the Deer Grove Forest Preserve, where you can still find the pilings for the bridge that crossed the creek."



Source: Wikipedia [https://en.wikipedia.org/w/index.php?title=Palatine, Lake Zurich and Wauconda Railroad&oldid=806538516](https://en.wikipedia.org/w/index.php?title=Palatine,_Lake_Zurich_and_Wauconda_Railroad&oldid=806538516)

Tom Burke Photo Palatine Lake Zurich & Wauconda Fill Salt Creek Deer Grove Forest Preserve Palatine Dec. 1988 #1

<https://flic.kr/p/Zhvsf5>

WE NEED YOUR HELP!

WILL YOU HELP US KEEP OUR
LOCAL HISTORY ALIVE? BECOME
A MEMBER TODAY! IT'S
INEXPENSIVE AND FUN!

VISIT WAUCONDAHISTORY.ORG

